



Thermal Innovations and Products

# INHECO Measurement Plate

► [Datasheet](#)

# INHECO Measurement Plate (IMP)

## Product Description

The IMP is a compact and precise measurement tool in SBS format for verifying the temperature, relative humidity or shaking performance of INHECO's heating, cooling, incubation and shaking devices used in LabAutomation applications.

The cordless design allows a flexible use of the IMP, even measurements in closed systems, e.g. incubators are possible. The IMP can be handled by all common gripper systems which gives the opportunity to automate the whole verification / validation process. 10 built-in temperature sensors guarantee the seamless monitoring of the temperature distribution over the whole surface area, a three-axis acceleration sensors determines the shaking speed and amplitude.

The measurement data are stored on an internal EEPROM and can be transferred via USB or built-in IrDA interface to an external PC for evaluation and analysis. The IMP is equipped with a µSD memory card for additional data storage and for an alternative data transfer option between the IMP and the computer.

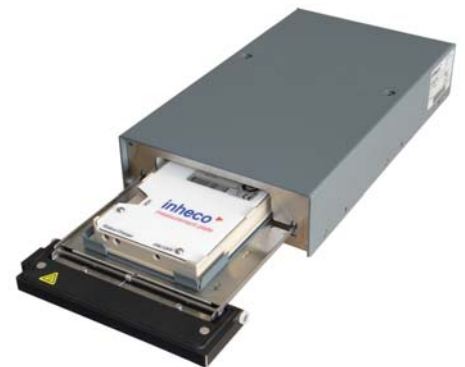


7901000: INHECO IMP

## Scope of delivery

The IMP is delivered with a standard DKD or NIST calibration of the temperature sensors. INHECO recommends an annual re-calibration. The calibration of the accelerations sensors can be ordered separately.

The basic temperature evaluation software is included in the IMP package. The standard IMP comes with a flat bottom contact surface. Adapters for other formats, e.g. 96 well PCR plate, are available on request.



7300003 Incubator MP with 7901000 IMP

Product	Article No.	Dimension W x D x H (mm)	Weight (kg)	Temp.Range
IMP	7901000	85,7 x 128 x 14,9	0,1 kg	0°C to 60°C

## IMP Evaluation Software

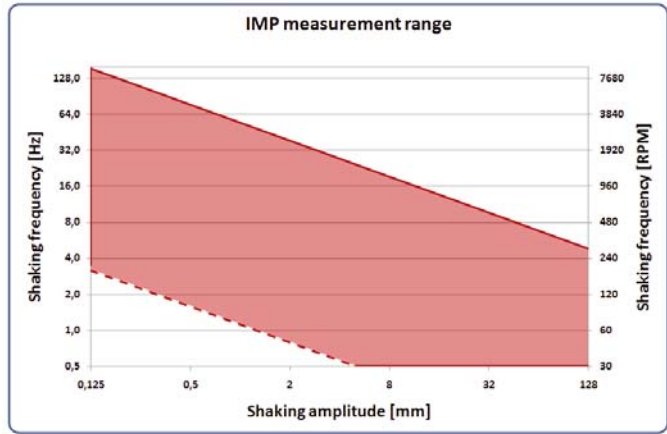
In order to maximize the performance of the IMP, INHECO offers a powerful analysis software tool to verify and validate a broad range of temperature and shaking settings. Test units of the IMP are available on request.



# Main Specifications

Specification	7901000
Interface	USB (1.1 / 2.0), IrDA
Number of temperature sensors	10
Relative humidity 0%-10%, 91%-100%	± 4,0%
Relative humidity 11%-90%	± 2,0%
Ambient temperature	15°C to 32°C
Accuracy amplitude	± 5%
Accuracy RPM	± 1%
Max. # measurement points (without $\mu$ SD)	10.000
Run-time battery in operation*	min. 12 h.

\* at ambient temperature

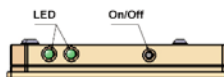
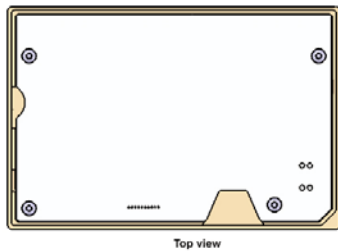
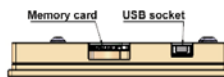
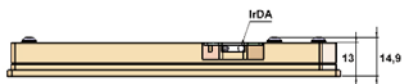
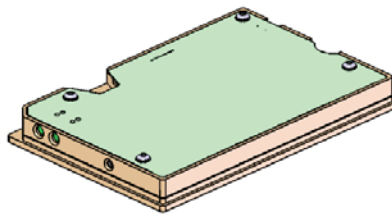
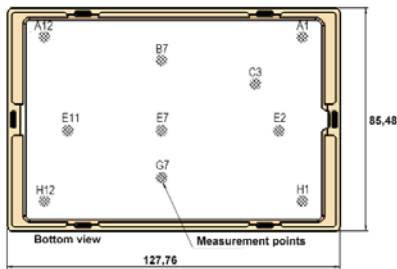


7901000 IMP measurement range

Temperature precision (calibrated)	± 0,1°C
Temperature precision @60°C on Flat Bottom**	± 0,3°C
Temperature accuracy (calibrated)	± 0,1°C
Temperature accuracy @60°C on Flat Bottom**	± 0,8°C

\*\* measured at 60°C on a Flat Bottom Adapter with a CPAC unit

# Drawings



3200369 PCR 96 Well Adapter

# Accessories & Related Products

Product	Article No.	Product	Article No.
96 Well PCR Adapter	3200369	IMP Calibration NIST/DKD	7901002

**INHECO**  
Industrial Heating & Cooling GmbH

Fraunhoferstrasse 11  
82152 Martinsried  
Germany

Tel.: +49 (0)89 899593-101  
Fax: +49 (0)89 899593-149

E-mail: [sales@inheco.com](mailto:sales@inheco.com)  
[www.inheco.com](http://www.inheco.com)

This Datasheet can also be downloaded from our website. For further information, please contact our sales department.

