



Thermal Innovations and Products

# INHECO Measurement Plate

► [Datasheet](#)

# INHECO Measurement Plate (IMP)

## Product Description

The IMP is a compact and precise measurement tool in SBS format for verifying the temperature and / or shaking performance of INHECO's heating, cooling, incubation and shaking devices used in LabAutomation applications.

The cordless design allows a flexible use of the IMP, even measurements in closed systems, e.g. incubators are possible. The IMP can be handled by all common gripper systems which gives the opportunity to automate the whole verification / validation process. 10 built-in temperature sensors guarantee the seamless monitoring of the temperature distribution over the whole surface area, 2 acceleration sensors determine the shaking speed and amplitude.

The measurement data are stored on an internal EEPROM and can be transferred via USB or built-in IrDA interface to an external PC for evaluation and analysis. To enlarge the data storage capability, the IMP can be equipped with an additional  $\mu$ SD memory card. The measurement profile can be easily pre-adjusted for each run, by connecting the IMP via interface to the INHECO IMP software. Parameters like "measurement duration", "scan interval for sensors", etc. can be set and adjusted individually.

The temperature and shaking data can be exported in csv format for customized evaluation or transferred into the INHECO evaluation software for a standard evaluation.



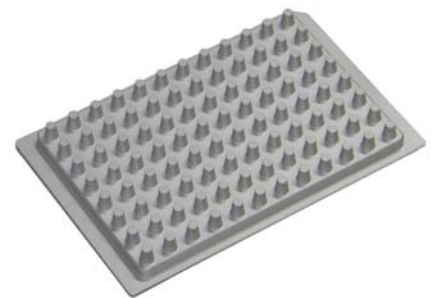
7901000: INHECO IMP

## Scope of delivery

The IMP can be ordered with a pre-calibration done by INHECO or with NIST / DKD calibration of the temperature and acceleration sensors.

The basic temperature evaluation software is included in the IMP package. For advanced temperature and shaking performance analysis, the full IMP evaluation software is recommended.

The standard IMP comes with a flat bottom contact surface. Adapters for other formats, e.g. 96 well PCR plate, are available on request.

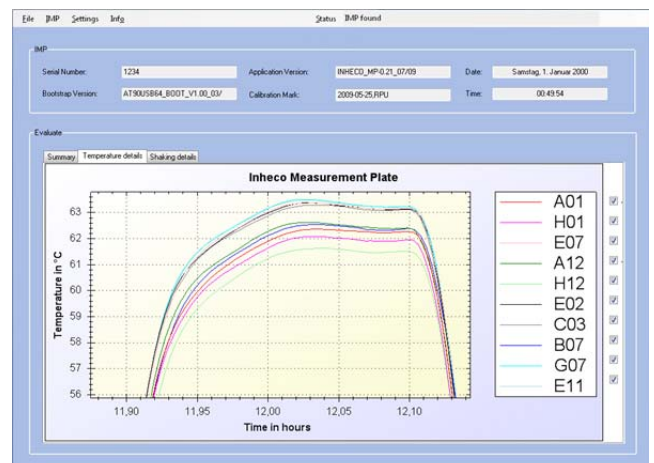


3200369 PCR 96 Well Adapter

Product	Article No.	Dimension W x D x H (mm)	Weight (kg)	Temp.Range	RPM Range
IMP	7901000	85,7 x 128 x 16,2	0,12 kg	0°C to 60°C	600 - 3.000 rpm

## Full IMP Evaluation Software

In order to maximize the performance of the IMP, INHECO offers a powerful analysis software tool to verify and validate a broad range of temperature and shaking settings. Test units of the IMP are available on request.



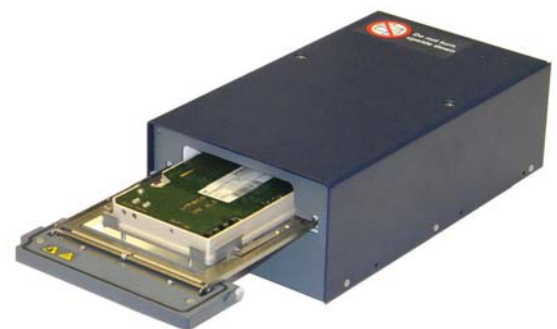
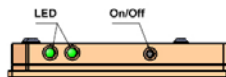
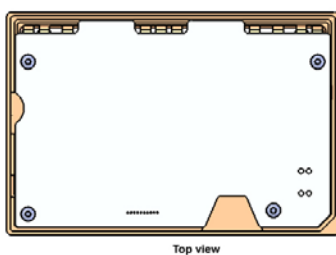
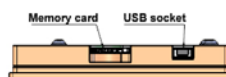
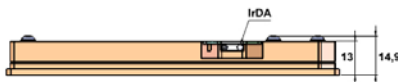
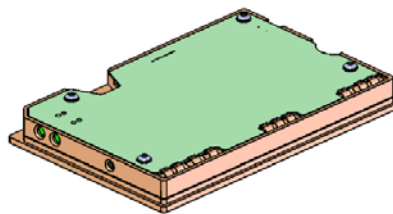
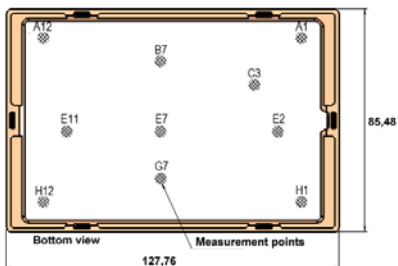
## Main Specifications

Specification	7901000
Accuracy	$\pm 0,5^{\circ}\text{C}$
Number of temperature Sensors	10
Relative Humidity	10%-80%
Ambient temperature	15°C to 32°C
Amplitude (min-max)	0-3mm
Accuracy Amplitude	+/- 10%
Accuracy RPM	ca. 1%
Max. # measurement points (without SD)	10.000
Run-time battery in operation	18 h.
Interface	USB (1.1 / 2.0), IrDA



7901000 IMP with CPAC Ultraflat

## Drawings



7300013 Incubator Shaker with 7901000 IMP

## Accessories & Related Products

Product	Article No.	Product	Article No.
96 Well PCR Adapter	3200369	IMP Calibration NIST/DKD	7901002
Full IMP Evaluation Software	7901001		

**INHECO**  
Industrial Heating & Cooling GmbH

Fraunhoferstrasse 11b  
82152 Martinsried / Munich  
Germany

Tel.: +49 (0)89 89 577-314  
Fax: +49 (0)89 89 577-349

E-mail: [sales@inheco.com](mailto:sales@inheco.com)  
[www.inheco.com](http://www.inheco.com)

This Datasheet can also be downloaded from our website. For further information, please contact our sales department.

