



Thermal Innovations and Products

Incubator MP/DWP

► [Datasheet](#)

Incubator MP & Incubator DWP

Product Description

The INHECO Incubator MP and Incubator DWP are compact incubating positions for one standard SBS Microplate or Deepwell Plate. They can be used as a stand-alone device, or stacked to form a tower of up to 6 units. Even stacking of different devices of the Inheco Incubator family in one tower is possible, the devices in the tower can be controlled through the master-slave principle.

Precise temperature control, USB interface, plate loading sensors and several self test routines guarantee a safe, precise and fast processing of samples. Software and verification tools are available to form a complete thermal solution for all kinds of incubation applications.

The Incubators are plug-and-play high performance devices with CE and UL certification. They are also prepared for use in customer IVD applications.

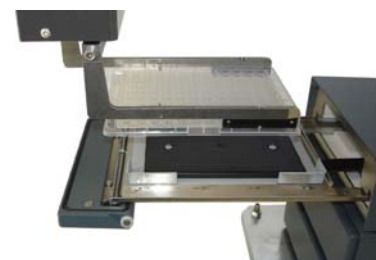


7300003 Incubator MP

Application Areas

The Incubator MP/DWP products are mainly used on robotic platforms and systems in LabAutomation to form a self-contained temperature controlled area for one Microplate. The automated drawer system offers direct and easy access by robotic grippers for loading and unloading and even direct access with pipetting heads. The lid is turning 90° after opening the drawer to enable easy portrait and landscape gripping.

The INHECO Incubators are designed for the use in fundamental research, drug discovery, clinical research and diagnostics in the Life Science market. They are tested for the operation with an increasing number of established LabAutomation systems, please contact us for more information.



7300003 Incubator MP

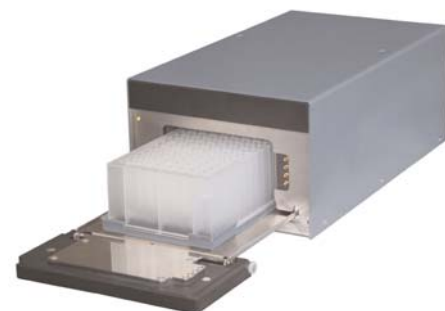
Variants

The Incubators MP and DWP are part of our new family of incubator products, which will be further expanded in the near future. For the Incubator Shaker MP unit, we refer to the respective data sheet. All variants can be operated together in one stack, providing maximum flexibility.

Product	Article No.	Dimension W x D x H (mm)	Weight (kg)	Temperature range
Incubator MP	7300003	149 x 268 x 52	2,6	Ambient to +80°C
Incubator DWP	7300006	149 x 271 x 106	3,4	Ambient to +80°C

Product Services

In order to maximize the performance of the installed Incubator, INHECO offers to determine the temperature offset value for specific plates, design and production of customized thermal plate adapters and deck adapter flanges, calibration of complete systems and verification/validation experiments. Test units are available on request.



7300006 Incubator DWP

Main Specifications

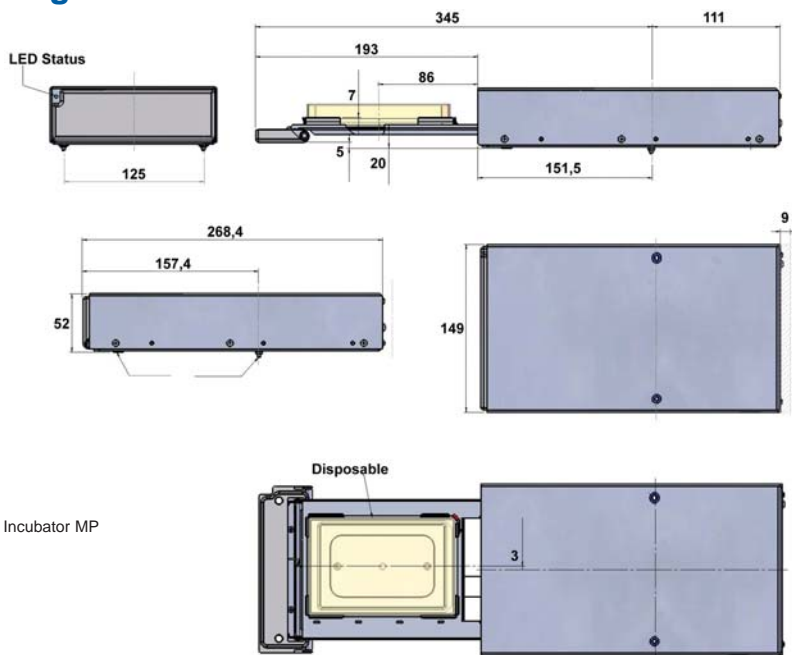
Specification	7300003	7300006
Accuracy at 37°C target temperature	±0,3°C	±0,3°C
Uniformity at 37°C target temperature	±0,5°C	±0,6°C
Heat up time 15°C to 37°C*	15 min.	15 min.
Drawer accuracy (mm)	±0,3	±0,3
Input	24 Vdc / 1A	24 Vdc / 3A
Interface	USB	USB
Ambient temperature	15°C to 32°C	15°C to 32°C

* measured in well

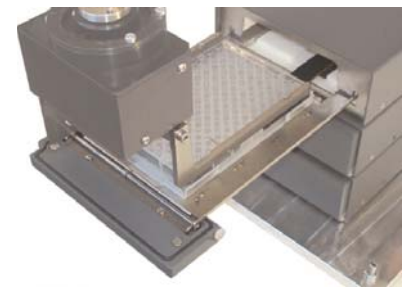


7300003 Incubator MP 5 unit stack

Drawings



7300003 Incubator MP



7300003 Incubator MP Gripper access

Accessories & Related Products

Product	Article No.	Input	Power Output
Power Supply FSP-180 AAA	2400121	110-230 V 50/60 Hz	24V / 7A
Power Supply SPU45E	2400122	110-230 V 50/60 Hz	24V / 2A

Adapter Round Bottom	7900042
----------------------	---------



7300003 Incubator MP and 7300013 Incubator Shaker mixed stack

INHECO
Industrial Heating & Cooling GmbH

Fraunhoferstrasse 11b
82152 Martinsried / Munich
Germany

Tel.: +49 (0)89 89 577-314
Fax: +49 (0)89 89 577-349

E-mail: sales@inheco.com
www.inheco.com

This Datasheet can also be downloaded from our website. For further information, please contact our sales department.

