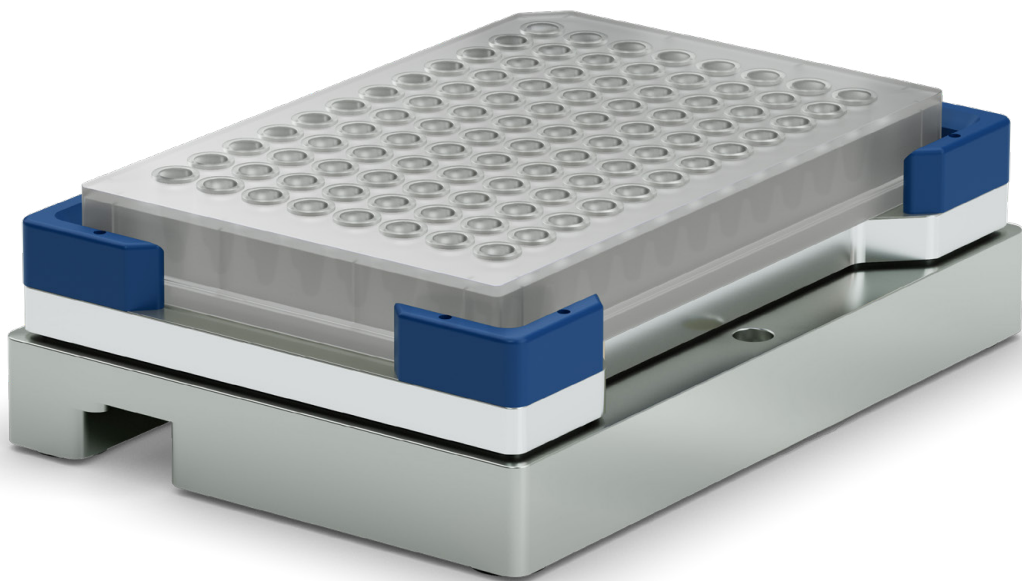


Shaking



# Teleshake and Teleshake AC

Flexible, wide-range non-heated shaking solutions

# Premium shaking devices

## Small footprint & compact design for robotics integration

### Teleshake

#### Product description

The Teleshake has a very compact and low-profile design with a height of only 39 mm. Its small footprint makes it ideal for integration into automation platforms. Plates with up to 384 wells can be used with the Teleshake. It has a precise automated zero positioning (centric position precision:  $\pm 0.1$  mm) that allows for comfortable robotic gripping. Plates are securely fixed during shaking with a mechanism that is easily adaptable for different plates. The shaking frequency (100 - 2,000 rpm) and shaking pattern (linear & orbital) are comfortably adjusted. A low-speed startup process prevents spillage. The Teleshakes are high performance plug-and-play shaking devices that can be operated as standalone with a control module, or with a PC via RS232 interface. Up to 14 devices can be connected and operated in series (daisy-chaining).

The maximum shaking frequency depends on the selected amplitude (2 or 3 mm) and the total weight of the liquid-filled disposable. At a given load, higher maximum shaking frequencies can be used with the 2 mm amplitude shaker compared to the 3 mm shaker. Whether a higher shaking frequency or a higher amplitude is needed for your assays depends on your requirements and needs to be tested. The minimum adjustable frequency is 100 rpm, the maximum frequency is 2,000 rpm. The maximum load of 500 g should not be exceeded.



Teleshake & Accessories, 3800047

#### Benefits

- Secure & flexible plate fixation
- Ideal frequency for 96 & 384 plates
- Suitable for vials, reservoirs & troughs
- Shaking speed: 100 to 2,000 rpm
- Orbital or linear shaking
- Amplitude 2 or 3 mm
- Central zero self-positioning
- Frequency infinitely adjustable

Product	PartNo.	Tubes, wells	Shaking frequency (rpm)	Amplitude	Dimensions W x D x H (mm)
Teleshake 230 V EU	3800047	1-384	100 - 2,000	2 mm	103 x 146 x 39
Teleshake 115 V US	3800048	1-384	100 - 2,000	2 mm	
Teleshake 230 V UK	3800049	1-384	100 - 2,000	2 mm	
Teleshake 100 V JP	3800050	1-384	100 - 2,000	2 mm	
Teleshake 230 V EU	3800063	1-384	100 - 2,000	3 mm	
Teleshake 115 V US	3800064	1-384	100 - 2,000	3 mm	
Monoshake 115V	3800080	1-384	100 - 2,000	2 mm	103 x 146 x 40
Teleshake 1536-8. 230 V	3800072	384-1536	4,000 - 8,500	0.1 to 1.0 mm	103 x 145 x 56
Teleshake 1536-8, 115 V	3800074	384-1536	4,000 - 8,500	0.1 to 1.0 mm	103 x 145 x 56

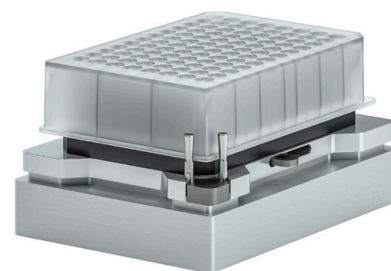
Each shaker includes a control module (power supply & rpm control). Further country specific & OEM versions available.

# Teleshake AC

The new Teleshake AC is one of the most compact shakers available with a very low profile. The automated labware clamping mechanism increases process reliability and facilitates the use of a wide variety of disposables, such as standard ANSI/SLAS plate formats, or other reagent containers or tubes. The clamping enables piercing of sealed labware or shaking of disposables with lids. The clamping pins can be customized to fit your processing requirements.

The Teleshake AC is equipped with a powerful shaker motor, that directly drives the shaker plate. This results in high shaking frequencies of up to 3,000 rpm and a higher load capacity of 500 g across the whole frequency range. The automated zero positioning allows for comfortable robotic gripping and a low-speed startup process prevents spillage.

For single Teleshake AC devices, the power supply and temperature setting/control is performed through the INHECO Single TEC Control unit (STC). For multiple (up to six) INHECO heating & cooling units – incl. Teleshake AC – an INHECO Multi TEC Control unit (MTC, with display) or MTC Compact (no display) is used and each device is controlled individually. A yellow slot module is required to connect the Teleshake AC to the STC/MTC.



Teleshake AC, 7100151

Product	Part No.	Dimensions W x D x H (mm)	Shaking frequency (rpm)	Amplitude
Teleshake AC	7100151	101 x 144 x 47	200 - 3,000	2 mm

## Alternatives

For heated and cooled shaker units, please refer to the heating & shaking (Teleshake 95 & Teleshake 95 AC) and heating, cooling & shaking (Thermoshake & Thermoshake AC) brochures.

## Verification plate

INHECO offers a compact and precise measurement plate (IMP) in ANSI/SLAS (formerly SBS) format for the verification of temperature and/or shaking performance. The IMP can be used on heating, cooling, shaking devices and inside incubation chambers. For more information, please refer to the IMP brochure.



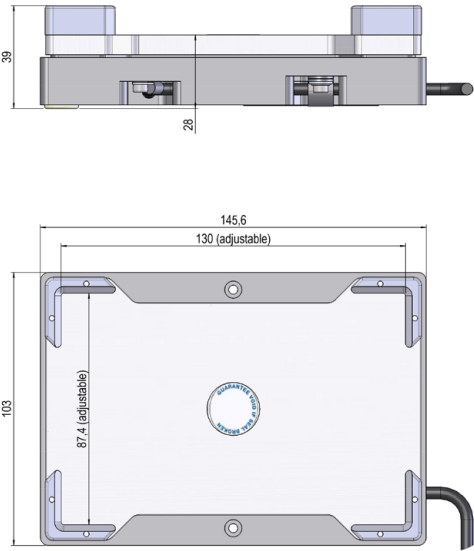
Thermoshake Classic (back), 7100146  
Thermoshake AC (front), 7100160

Product	Part No.	Dimensions W x D x H (mm)	Weight	Temperature range
IMP	7901000	87.5 x 128 x 14.9	100 g	4 °C to 60 °C

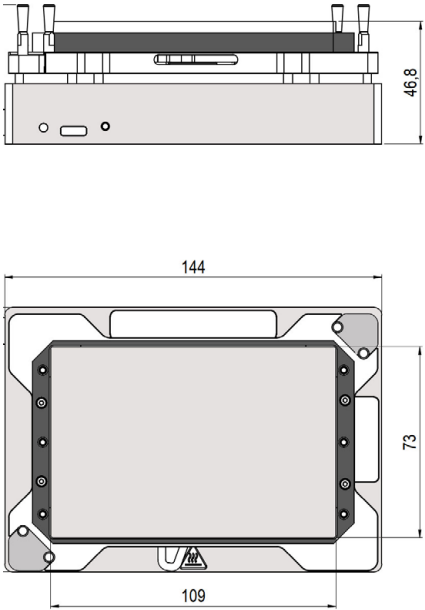
Visit us on [www.inheco.com](http://www.inheco.com)

### Drawings

*Teleshake, 3800047-3800064\**



*Teleshake AC, 7100151*



\*Drawings other Teleshake variants on request