

Assembling the transportation lock

The transportation lock is needed for Incubator Shaker transports to avoid damage to the shaker mount.



IMPORTANT!

- Turning the unit upside down might require a renewal of the shaker drive calibration.
 - Do Not turn the two screws too hard, just finger tight.
 - Do Not use a screwdriver the red covers help to tighten them by hand! If the screws are tightened to hard it could damage mechanical parts inside the device!
- Insert the Metal Plate (received with delivered instrument) into the grid, if it does not slide into to have direct contact you might have to start over.

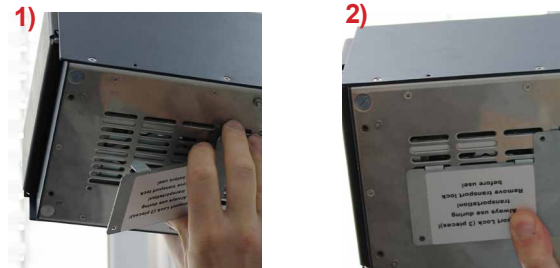


Fig.1: Metal Plate insertion

NOTE

- 1) Turn the unit about 45° to the back to position the lock correctly. With this movement the front-rear-shaker is moved to the back and only then the lock can be placed correctly.
 - 2) Turn the unit about 45° - 60° to the left to position the lock correctly. With this movement the sideways-shaker is moved to the left and only then the lock can be placed correctly.
- <http://www.inheco.com/service/returns-rma.html> for short instruction video

- Screw the 2 screws with red head by hand (only hand-tight)



Fig.2: placing screws

- After the transportation lock is installed correctly. The device can be shipped without a risk of transport damage if the original packaging is also use.



Fig.3: correct installed transportation lock

NOTE

Check whether the screws are screwed in the threat hole by trying to pull them out gently. Otherwise it might happen that the screws fall out during shipment.



Fig.4: incorrect installed transportation lock